

Trust Precision Engineering Limited

Unit 2 Meadowbank Court

Eastwood

Nottingham NG16 3SL

Office +44 (0) 1773 719 239

Mail info@trustprecisionengineering.co.uk

Web www.trustprecisionengineering.co.uk

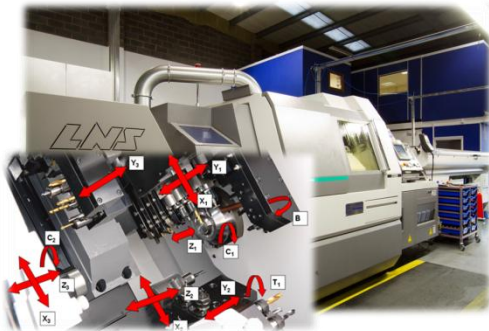


Capacity and Capability List

Clean, modern, fully air-conditioned workshops
>6000²ft factory floor space
>2000²ft Office/stores/meeting rooms
Temperature controlled and fully networked inspection facilities
Conveniently located in East Midlands close to M1 J26 and East Midlands Airport



Key Plant and Machinery:



Citizen M32 VIII Sliding Head Lathe (x6 machines)

Up to 35mm bar capacity
*Long parts up to 600mm (max 32 diameter)
40 tool positions for flexibility
Up to 18 live tools for milling
Fully programmable B-axis for angled milling/drilling
130bar high-pressure coolant
3.6m magazine bar-feeder
*1 machine with this facility

Star SR20RIV type B

Up to 22.2mm bar capacity
41 tool positions for flexibility
High speed 10,000rpm main and sub spindle
6 tool capacity on B axis to main and sub spindle
130bar high-pressure coolant
3.6m magazine bar-feeder



Citizen L20 XII Sliding Head Lathe

Up to 25mm bar capacity
Guide bush or bushless mode
40 tool positions for flexibility
Up to 21 live tools for milling
Fully programmable B-axis for angled milling/drilling
130bar high-pressure coolant
3.6m magazine bar-feeder
LFV chip breaker equipped

Inspection equipment:



OGP Smartscope Zip 250 (x2)

Optical CMM with Renishaw touch probe capability
 High Accuracy/Speed Multi Sensor vision system
 XYZ 300/150/200
 Networked into QC Calc (with VICI systems) to produce full QA traceability
 Renishaw fixturing system to maximise automation of batch inspection

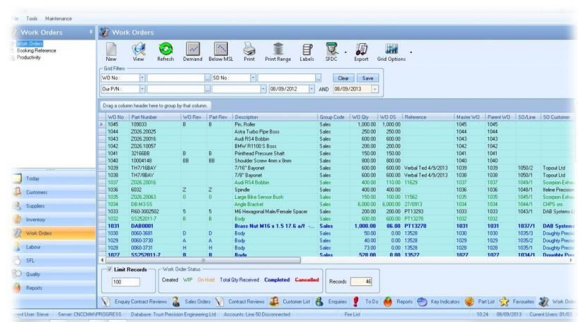
VICI M304 Techno Optical Shaft Measuring Machine (x3)

High speed precision shaft measurement
 300MM length x 40MM Diameter
 Integrated software with full reporting and traceability
 Measures and records all external features in seconds to micron accuracy



Production Control Software

Advance tailored MRP system
 Inquiry to Invoice, full integration
 Rapid data retrieval with complete traceability
 Progress Plus from Berkeley Myles Solutions



Trust Precision Engineering has a policy of continuous improvement investing in the best plant and systems available. The above listed plant (which is not exhaustive) is supported by all necessary tooling and equipment ensuring high quality performance to maintain our position as a leading supplier of machined parts and a reliable partner in your supply chain.



Member of the BTMA, British Turned Parts Manufacturers Association

www.btma.org



Member of the Midlands Aerospace Alliance

<http://www.midlandsaerospace.org.uk/>



EN/AS9100 Rev-D Quality Assured company

<http://www.bsigroup.com/en-GB/>

FS 604494