

Trust Precision Engineering Limited

Unit 2 Meadowbank Court

Eastwood

Nottingham NG16 3SL

Office +44 (0) 1773 719 239

Mail info@trustprecisionengineering.co.uk

Web www.trustprecisionengineering.co.uk



Capacity and Capability List

Clean, modern air-conditioned workshops
>6000²ft factory floor space
>2000²ft Office/stores/meeting rooms
Temperature controlled and fully networked inspection facilities
Conveniently located in East Midlands close to M1 J26 and East Midlands Airport



Key Plant and Machinery

Machine Tools:

Citizen M532 VIII Sliding Head Lathe

Up to 38mm bar capacity
>49 tool positions for flexibility
25+ potential live tools for milling
Fully programmable B-axis for angled milling/drilling
130bar high-pressure coolant
3.6m magazine bar-feeder
LFV Chip Control Technology



Citizen M32 VIII Sliding Head Lathe (x6 machines)

Up to 35mm bar capacity
*Long parts up to 600mm (max 32 diameter)
40 tool positions for flexibility
Up to 18 live tools for milling
Fully programmable B-axis for angled milling/drilling
130bar high-pressure coolant
3.6m magazine bar-feeder
*1 machine with this facility

Star SR20RIV type B

- Up to 22.2mm bar capacity
- 41 tool positions for flexibility
- High speed 10,000rpm main and sub spindle
- 6 tool capacity on B axis to main and sub spindle
- 130bar high-pressure coolant
- 3.6m magazine bar-feeder



Citizen L20 XII Sliding Head Lathe

- Up to 25mm bar capacity
- Guide bush or bushless mode
- 40 tool positions for flexibility
- Up to 21 live tools for milling
- Fully programmable B-axis for angled milling/drilling
- 130bar high-pressure coolant
- 3.6m magazine bar-feeder
- LFV Chip Control Technology

Citizen L(3)20 XII B5 LFV Sliding Head Lathe

- Up to 25mm bar capacity
- 10,000rpm main/sub spindle speeds
- Guide bush or bushless mode
- 41 tool positions for flexibility
- Up to 21 live tools for milling
- Fully programmable B-axis
- 130bar high-pressure coolant
- 3.6m magazine bar-feeder
- LFV Chip Control Technology



Citizen R(5)04 Sliding Head Lathe

- Up to 4mm bar capacity
- Ultra high speed/precision for small parts
- 20,000RPM main/sub spindle speeds
- 17 tool positions for flexibility
- 3 driven tools positions
- 3.6m magazine bar-feeder

XYZ TC 320 Fixed Head Mill/Turn

- Larger capacity Machine for parts >38MM Ø
- 91MM Ø Spindle bore
- 32kW 3,300RPM Spindle
- 100MM Y Axis travel
- Rugged, Reliable & Robust machine for larger parts



Inspection equipment:



OGP Smartscope Flash CNC 200 (x3)

Optical CMM with Renishaw touch probe capability
High Accuracy/Speed Multi Sensor vision system
XYZ 200/200/150

Zone 3 software with off line programming capability

Renishaw fixture system to maximise automation of batch inspection

VICI M304 Techno Optical Shaft Measuring Machine (x3)

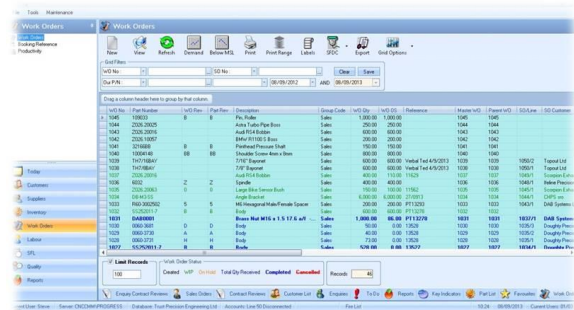
High speed precision shaft measurement
300MM length x 40MM Diameter
Integrated software with full reporting and traceability
Measures and records all external features in seconds to micron accuracy



Systems & Software:

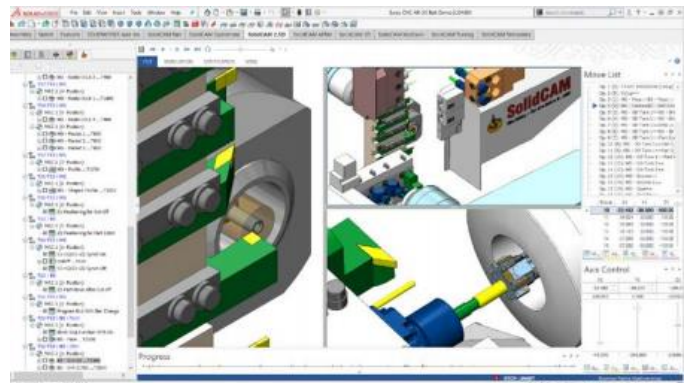
Production Control

Advance tailored MRP system
Inquiry to Invoice, full integration
Rapid data retrieval with complete traceability
Progress Plus from Berkeley Myles Solutions



CAD/CAM

Solidworks 3D Model generation
SolidCam software system
Reliable 3 channel simulation enabling best possible process optimisation
Reliable and consistent post program



Trust Precision Engineering has a policy of continuous improvement, investing in the best plant and systems available. The above listed plant (which is not exhaustive) is supported by all necessary tooling and equipment ensuring high quality performance to maintain our position as a leading supplier of machined parts and a reliable partner in your supply chain.



Member of the BTMA, British Turned Parts Manufacturers Association

www.btma.org



Member of the Midlands Aerospace Alliance

<http://www.midlandsaerospace.org.uk/>



EN/AS9100 Rev-D Quality Assured company

<http://www.bsigroup.com/en-GB/>

Revision 2024Q3_27/09/24